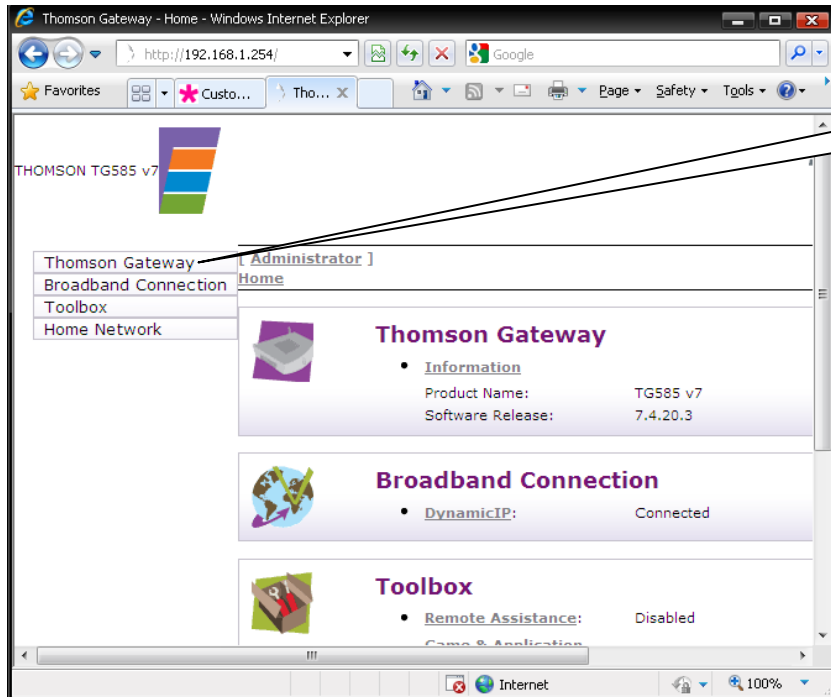


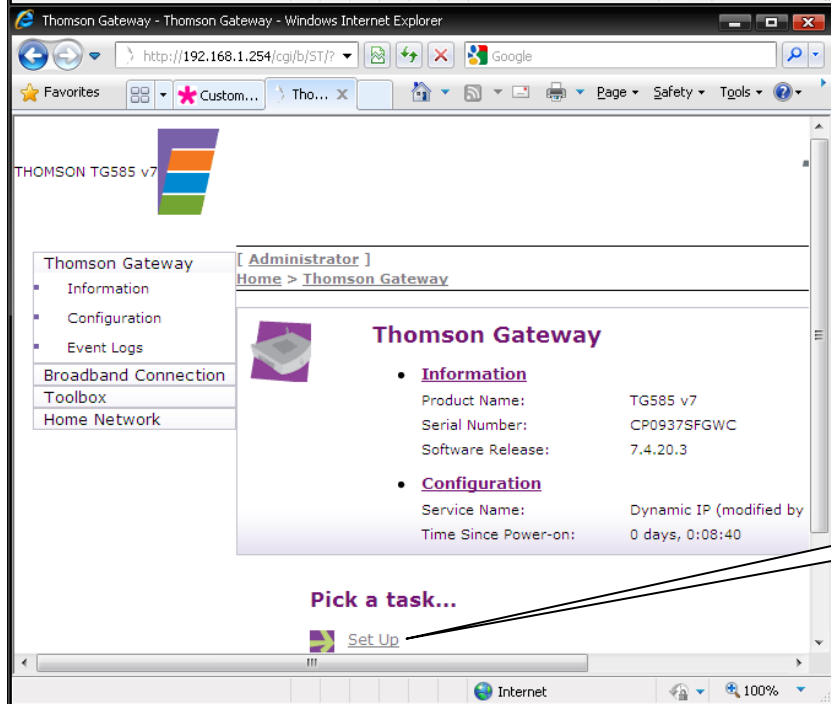
Thomson TG585v7 broadband router configuration guide

Plug in router, power on and connect to computer via Ethernet cable

Go to <http://192.168.1.254> and enter unique customer IP details as below:



Click "Thomson Gateway"



Click "Set Up"

Thomson TG585 v7: 09375FGWC - Windows Internet Explorer
http://192.168.1.254/cgi/wizard/?be=0&0=-1&1=-1

Be Broadband – static IP address

If you chose the static IP option when you ordered Be Broadband, you need to enter some details below. We sent you this information when you signed up.

Static IP address:
Enter your static IP address here. Its four numbers seperated by dots.

Subnet mask:
This is sometimes called the network mask.

Default gateway:

< Back Next > Cancel

Done Internet 100%

Customer's IP address

Customer's subnet mask

Customer's gateway

Thomson TG585 v7: 09375FGWC - Windows Internet Explorer
http://192.168.1.254/cgi/wizard/?be=0&0=-1&1=-1

DNS Settings

We just need two more bits of information. The DNS servers tell your computer where to find the websites you want to visit. Again, we sent you these details when you signed up.

Primary DNS Server:
Enter the IP address of the primary DNS server.

Secondary DNS Server:

< Back Next > Cancel


Done Internet 100%

Use the following DNS servers:
87.194.255.154
87.194.255.155

Thomson TG585 v7: 09375FGWC - Windows Internet Explorer
http://192.168.1.254/cgi/wizard/?be=0&l0=-1&l1=-1

Start configuration ?

Review settings before configuring the Thomson Gateway.



The Wizard has enough information to configure your SpeedTouch™. If you want to review or change settings, click Back. Click Start to start configuration.


Settings:

Device:	
Name	TG585 v7
Serial #	09375FGWC
Device Configuration:	
Region	UK
Provider	Be
Service	Broadband - Static IP
Description	Broadband with a static IP

< Back Start > Cancel

Done Internet 100%

Thomson TG585 v7: 09375FGWC - Windows Internet Explorer
http://192.168.1.254/cgi/wizard/?(1,13,0,1,0,0)&&static.tpl.gz&user.ini&93.96.174.149&255




THOMSON

Configuring your Thomson Gateway™

Please wait

Done Internet

Thomson TG585 v7: 09375FGWC - Windows Internet Explorer
http://192.168.1.254/cgi/wizard/?(1,13,0,1,0,0)&&static.tpl.gz&user.ini&93.96.174.149&255



THOMSON

Completing the Thomson Gateway™ Easy Setup

You have successfully completed the Thomson Gateway™ Easy Setup.

To close Easy Setup, click Finish.

< Back Finish Cancel

Done Internet 100%